



# Catalog, Code Group and Selected Sets



**SAP Knowledge Hub**

We Are Here to Boost Your Career  
Corporate Training || Classroom Training || Outsourcing



[info@ambikeya.com](mailto:info@ambikeya.com) || [www.ambikeya.com](http://www.ambikeya.com) || +917746805189

## SAP QM: Catalogs; Code Groups; Selected set

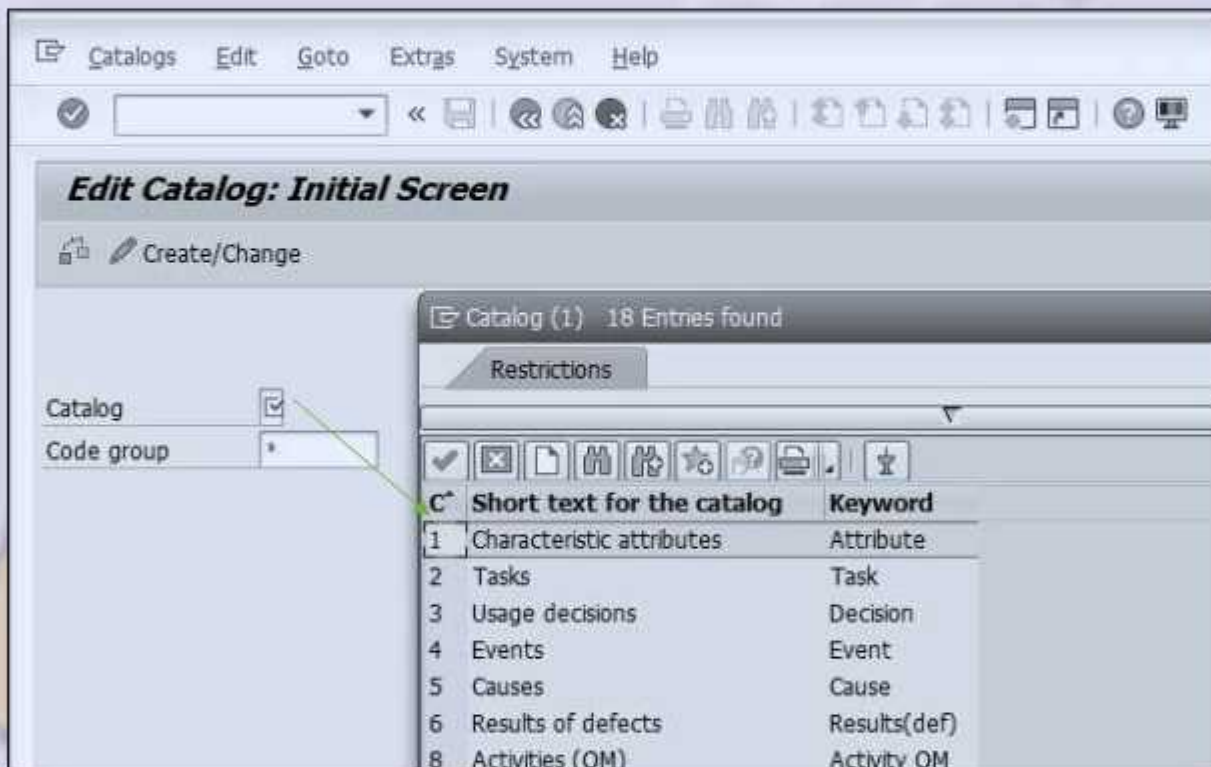
\*Note we are representing for visual Qualitative inspection characteristics; Qualitative characteristics are used to record the results of Attribute inspection like "Ok" or "Not ok".

Code groups / selected sets of Catalog type 1 can be used for recording result against Qualitative inspection characteristics. Appropriate inspection method can be attached to inspection characteristics.

Description: Catalogs & Code Group

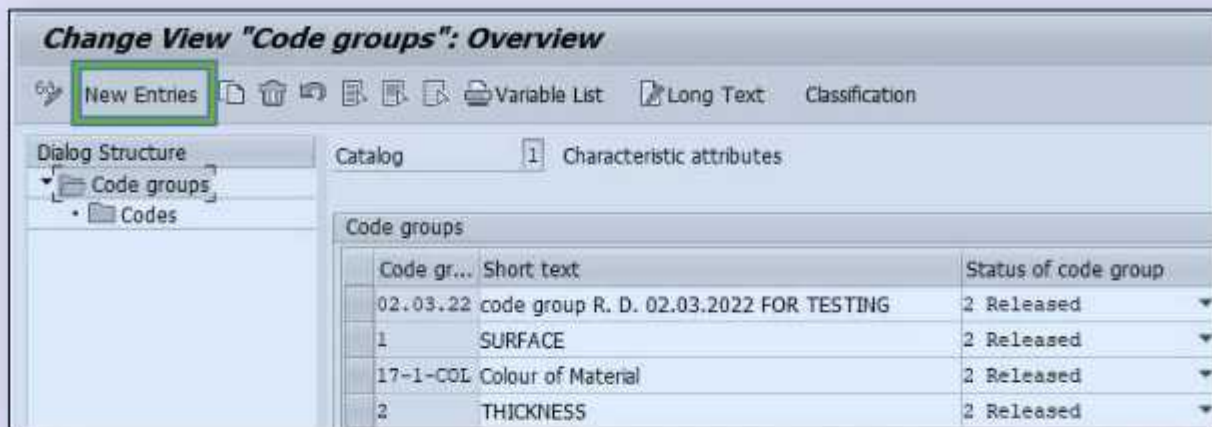
T-Code: QS41, QS42, QS43

### 1. Select Catalog as 1- Characteristics attributes



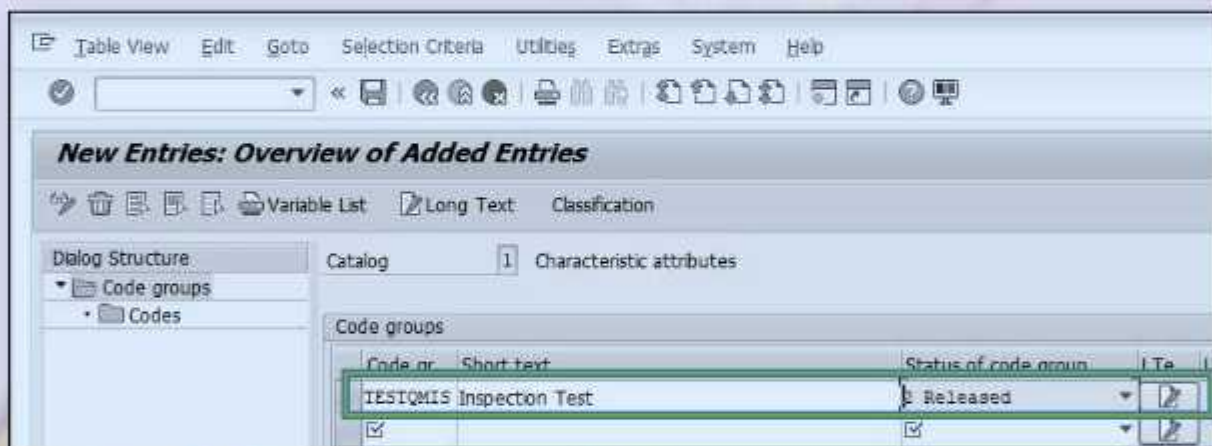
Next screen

### 2. Click on new entries to create new code groups.

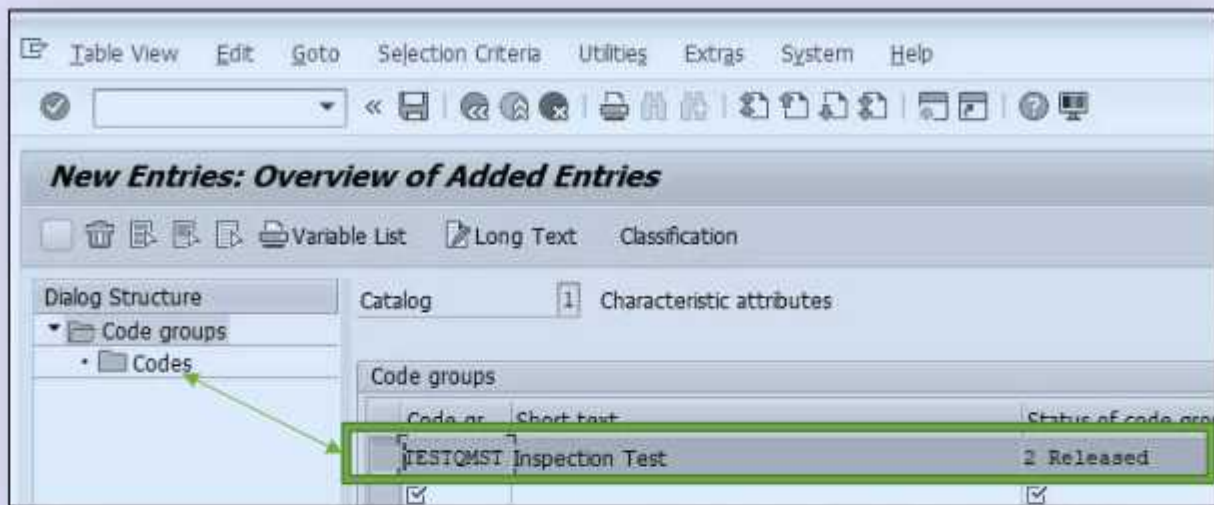


Next screen

3. Give code group name, short text, give status as released.

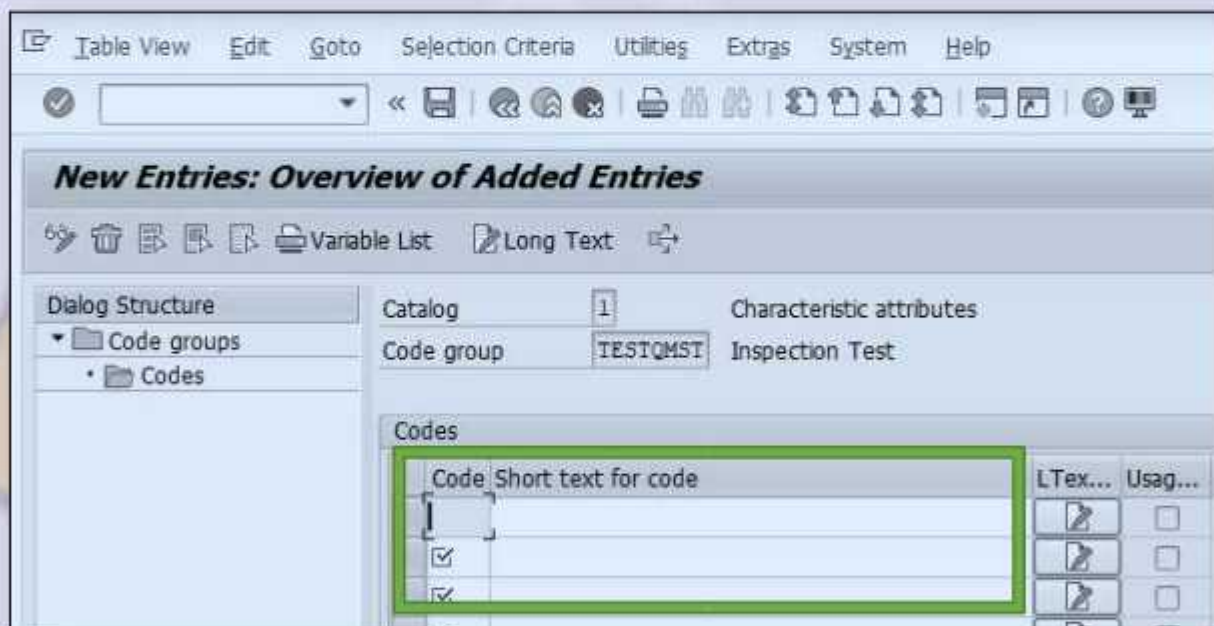


4. Select the code group line and click on codes

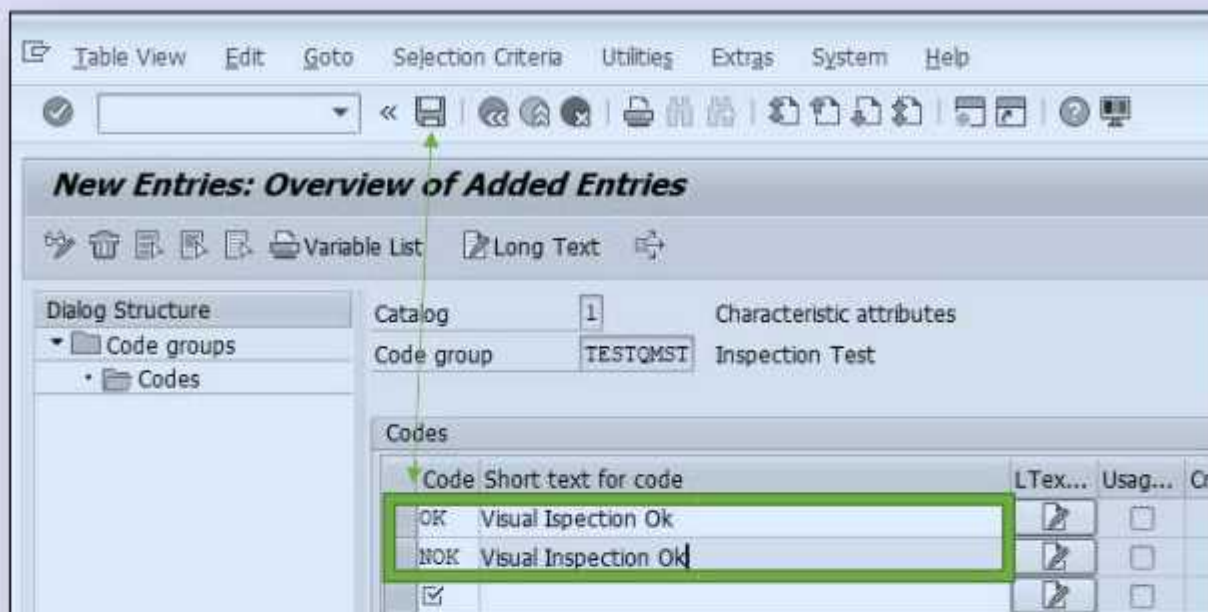


\*Next Screen

5. Create code as ok and not ok inspection



6. Add Code OK and NOK and short description for code



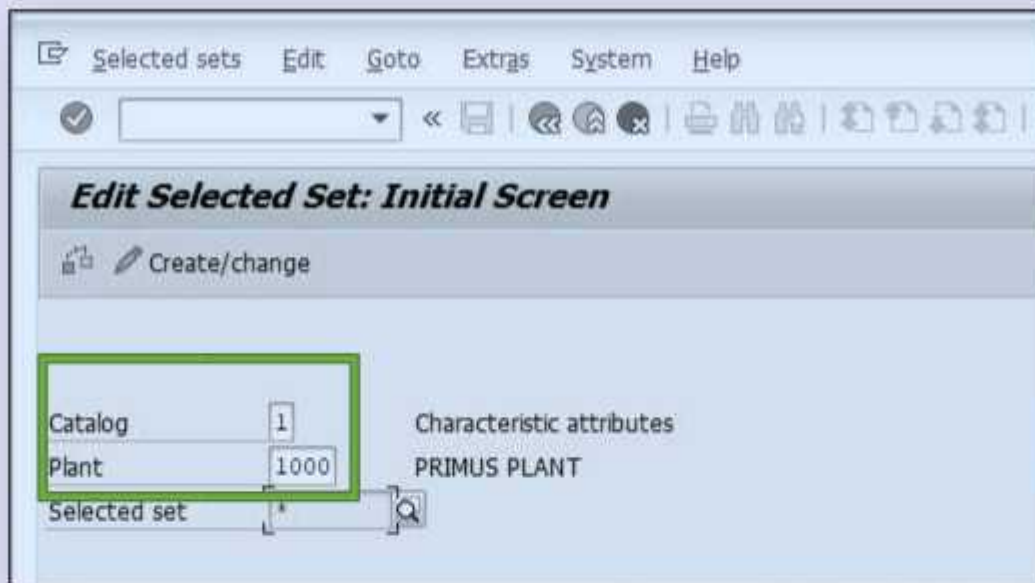
Click on save; Code group is created for visual inspection.

### Selected Set Plan

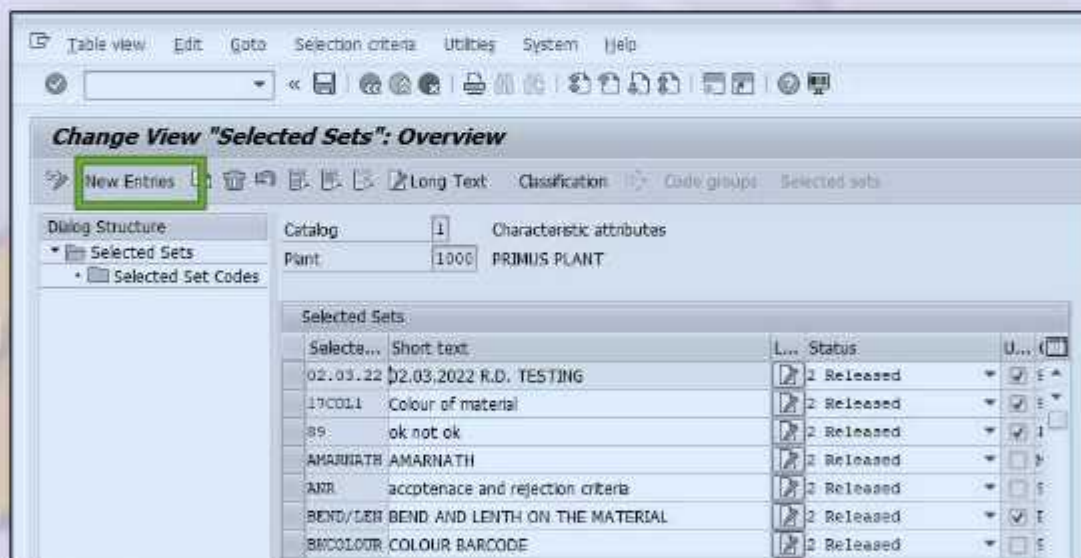
Description: Selected Set Plan

T-Code: QS51, QS52, And QS53

1. From SAP easy asses menu pass transaction QS51 to create selected set. Enter catalog as 1 and enter plant.

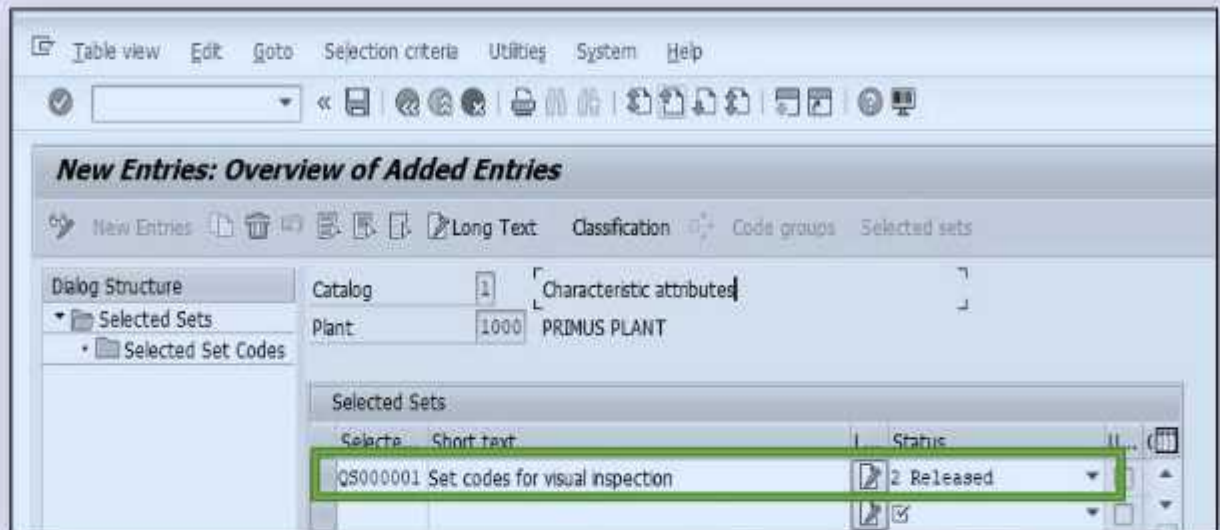


2. Click on new entries

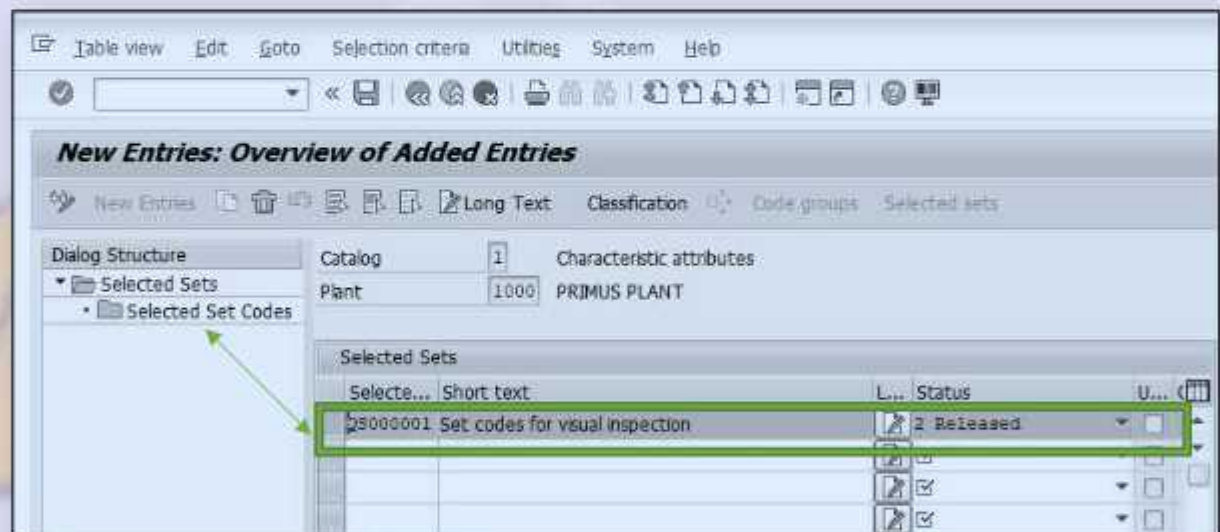


**\*Next Screen**

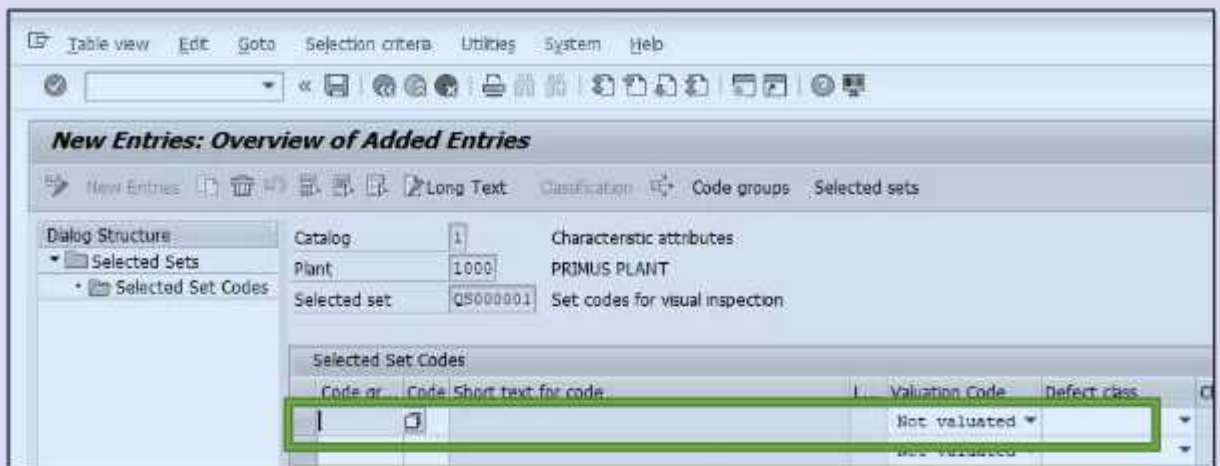
3. Add selection set code, short text and status as released.



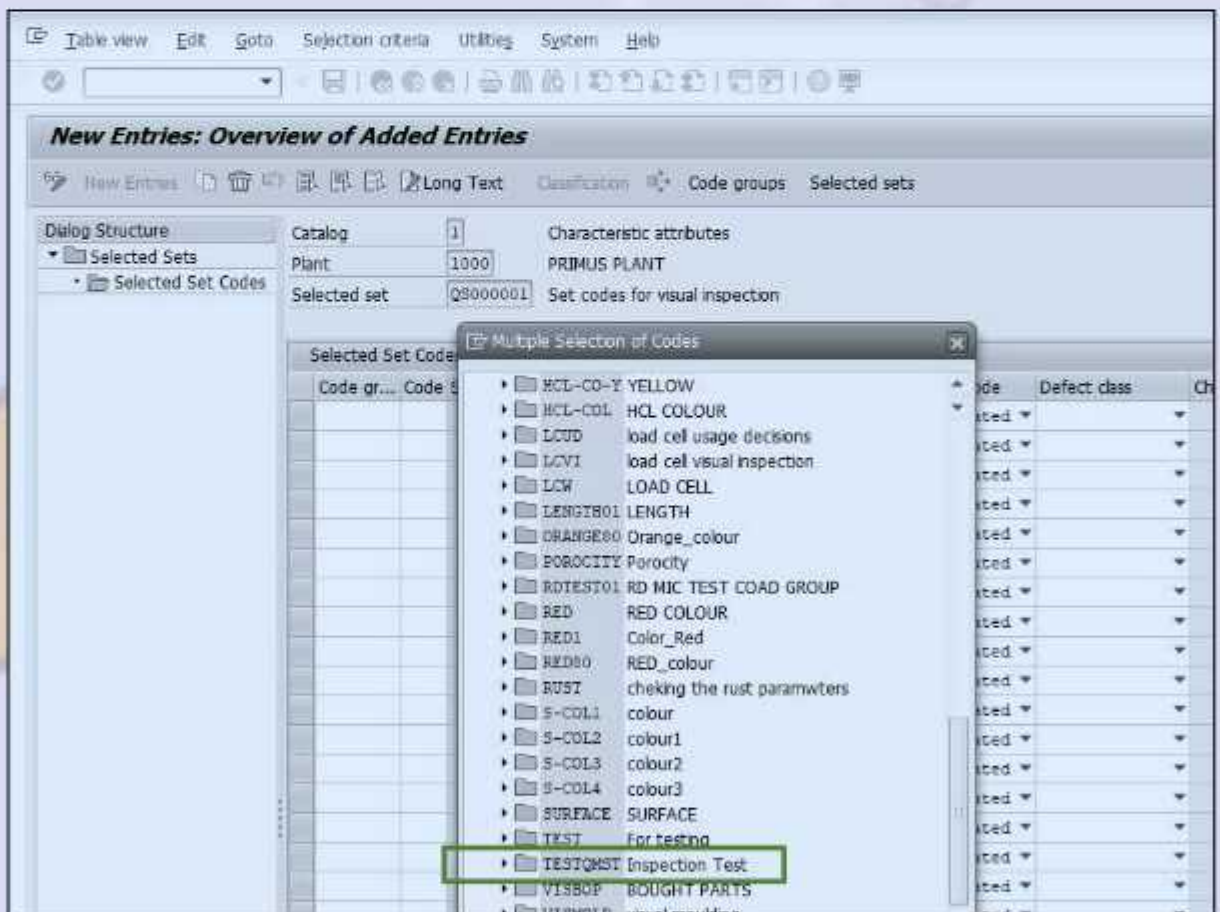
4. Select the line and click on selected set codes in dialog structure.



5. Click on new entries

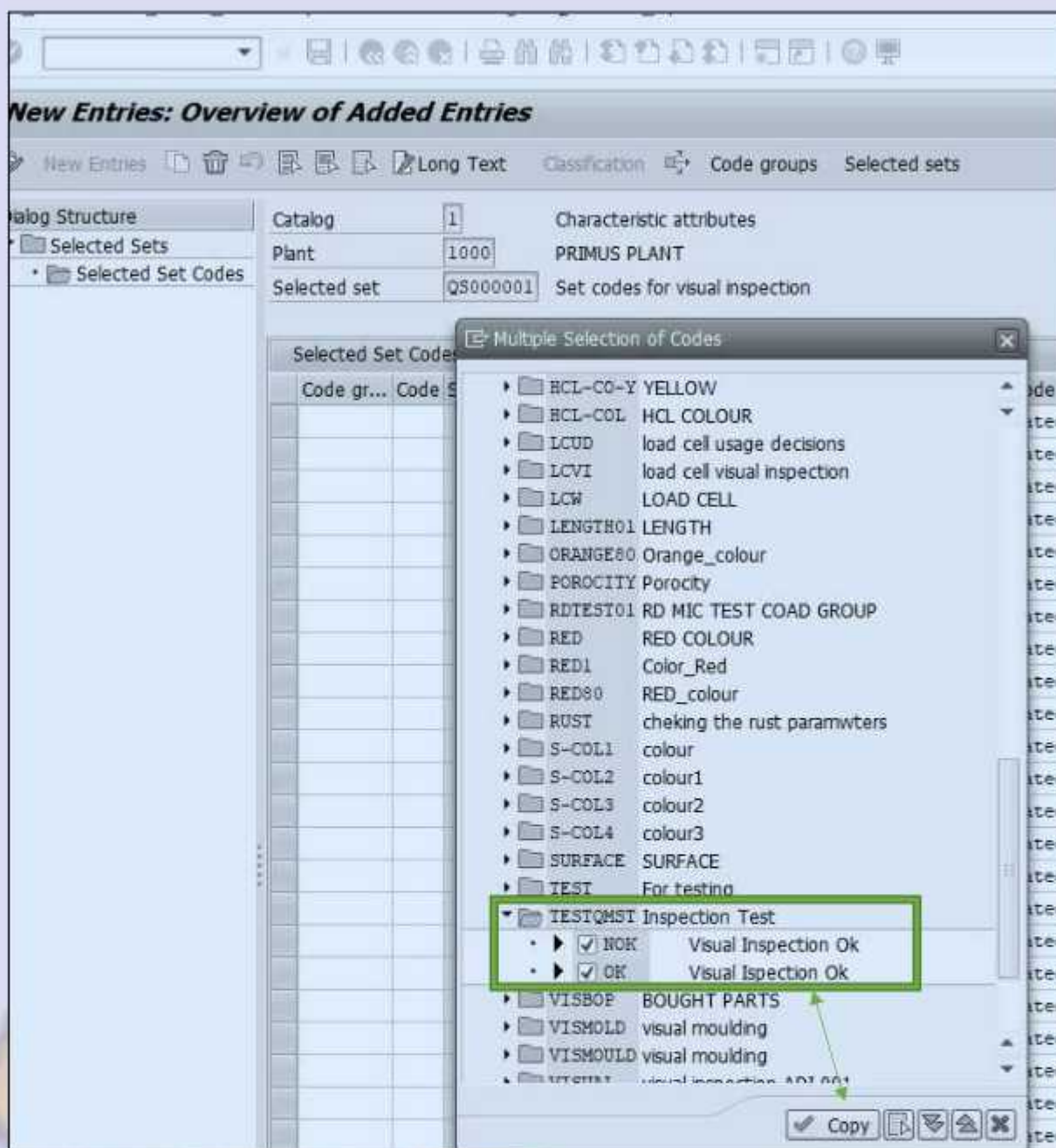


- Assign Code group we have created "TESTQMST" to selected set. Press f4 on code group to get multiple selection of codes.

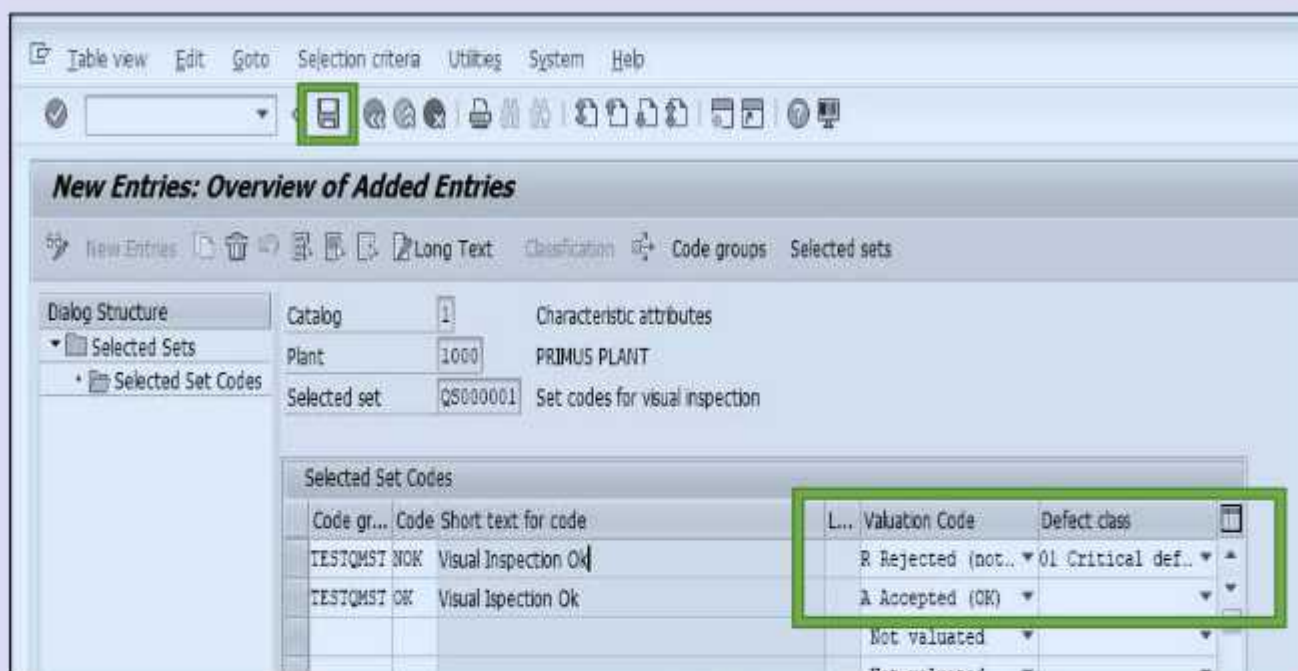


- Copy both the characteristics we created for TESTQMST, which is NOK and OK then copy.





8. Add defect class for not ok as critical defect and valuation code for as accepted for OK and rejected for NOK



Click on save to done.

**\*Further you have to create Master Inspection Characteristics and Mater Inspection Plan which is master data of Quality Management. We will discuss in next topic how to create it and how our created configuration will work.**

# THANK YOU



- **Corporate Training**
- **Instructor LED Training**
- **Seminars & Workshop Internship**
- **Mock Interview**
- **Customised Courses**
- **Project Support For Implementation**
- **Staff Augmentation And Talent**



**SAP Knowledge Hub**